

# BB22

Self Powered Point Source Speaker System



Touring & Installation

The BB22 is powered by Powersoft DSP Amplification Platforms.



## Key Features

The Blackbird BB22 is a compact, four way, self-powered, very high SPL, low distortion point source speaker system utilising coaxial component integration.

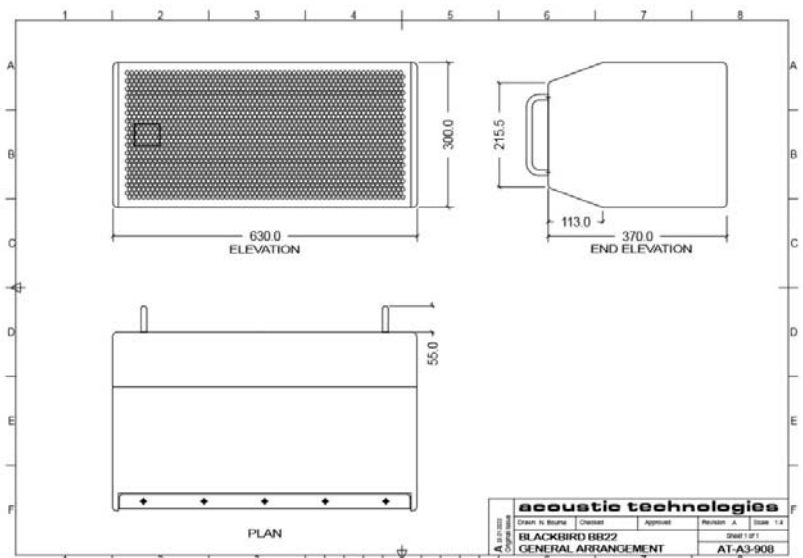
The amplifier is controlled by the PowerSoft Loto DSP System. The Loto DSP is also available in a Dante version.

The BB22's compact size and weight are ideal for many installation or touring applications. The flexibility of hardware includes 12 rigging points to allow all configurations of installation, a dual angle pole mount for use on speaker stands and two rear handles for ease of lifting.

Adding to its versatility are the wide range of custom decor matched colours available for the grille and the cabinet.

The BB22 is ideally suited to many installed or portable applications such as corporate audio/video presentations, live music production, worship production, theme and amusement parks and theatre performances.

- ▶ Very powerful extremely compact speaker system
- ▶ Rotatable waveguide (90° x 60° or 60° x 40°)
- ▶ Versatile bracket for mounting or standing



### Specifications

#### Acoustic Performance

Frequency Response	50Hz - 20kHz ± 3dB
Maximum SPL (Calculated)	135dB @ 1 metre
Frequency Dispersion	90° (H) x 60° (V) or 60° (H) x 40° (V) The MF/HF flare is rotatable allowing either horizontal or vertical cabinet orientation.

#### System Components

Transducer complement	2x 10", 3" Voice Coil Neodymium LF Transducer. 1x Coaxial Ring Radiator, 4" Voice Coil MF Neodymium Compression Driver. 1x Coaxial 1.4" Exit, 2.5" Voice Coil HF Neodymium Compression Driver.
-----------------------	--

#### Amplifier Specifications

Input Impedance	10 kOhms Balanced
Amplifier Module Output Power	4000 Watts Continuous 7,000 Watts Peak Program
Amplifier Module Type	4x Channel Powersoft Class D Amplifier with Loto DSP Platform. Dante Digital I/O is an available option
Amplifier Protection	Switch Mode Power Supply. Over Current / Short Circuit Over Temperature DC or High Frequency on Outputs
Indicator LEDs & Display	System Status Remote Status Preset Selected 1 - 4 1.8" TFT RGB Display
Connectors	2x Anaolg Input XLRs with Signal Link Connectors. 2x Switched Ethernet Ports PowerCon® AC Mains Inlet

#### Enclosure Specifications

Physical Size	Height 630mm, Depth 300mm, Width 370mm
Weight	26 Kgs
Enclosure Finish	AcoustiCoate Black Elastomer Finish Custom decor matched colours are available
Grille Finish	Black Powder Coat Finish Custom decor matched colours available
Mounting Options and Hardware	12 x Rigging Points to allow for all configurations of installation. Dual angle pole mount for use on speaker stands

#### Suggested Applications

- Live Music Production
- Houses of Worship
- Vocal and Music Reinforcement
- Live Theatre Sound
- Night Clubs
- Theme Parks
- Portable Rental Systems



The BB22 enclosure is constructed of high quality void free 12mm and 18mm Birch ply. The transducers are protected by a perforated steel mesh, lined with acoustically transparent material, providing a durable visually appealing finish.

Sensitivity, Maximum Power and SPL measurements are conducted in accordance with the AES 24 Hour Pink Noise Standard. Acoustic Technologies reserve the right to alter or amend the BB22 without prior warning in the interests of product improvement.

- For further information, please visit the Acoustic Technologies website at [www.atprofessional.com.au](http://www.atprofessional.com.au)

#### Acoustic Technologies

8-10 Staple Street, Seventeen Mile Rocks  
Queensland 4073, Australia  
Phone (617) 3376-4122  
Web [www.atprofessional.com.au](http://www.atprofessional.com.au)  
Email [info@atprofessional.com.au](mailto:info@atprofessional.com.au)