

SS30

FULL RANGE LOUDSPEAKER

atTM

PROFESSIONAL AUDIO SYSTEMS

MANUFACTURED IN AUSTRALIA



Touring and Installation

Acoustic Technologies' commitment to engineering superior loudspeaker products is exemplified in the SS30, a full range loudspeaker system which provides exceptional performance in a broad range of professional sound reinforcement applications.

The SS30 employs a highly efficient 12" Neodymium low frequency transducer in a ported enclosure and an advanced 3" Neodymium H.F. compression driver coupled to a H.F. waveguide developed specifically for this cabinet. The optimised passive crossover network provides a seamless, phase-coherent transition between the system components.

The cabinet is constructed from premium grade 18mm Birch ply finished in black AcoustiCoate. A perforated steel mesh grille protects the system components. The SS30 offers remarkable versatility for all applications. The cabinet's hardware includes rigging track on the top and rear panels for safe suspension and an industry standard pole-mount adaptor.

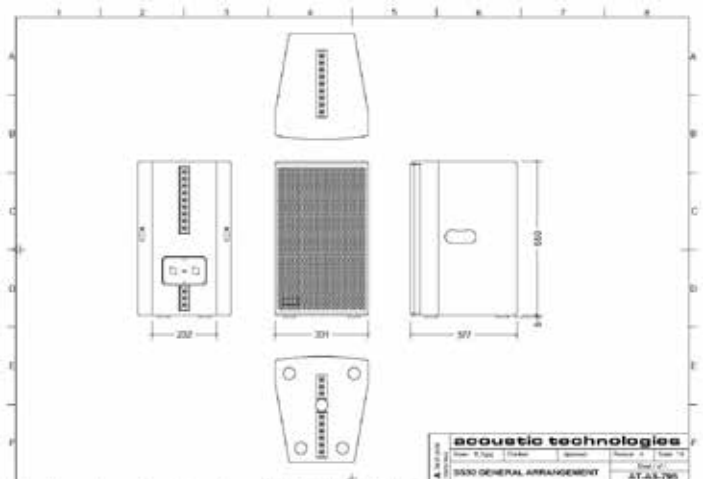
The SS30 is a truly professional loudspeaker system offering extremely high output with a smooth extended frequency response, eminently suitable for all music and vocal reproduction.

Key Features

- Versatile Full Range Loudspeaker System
- 1150 Watts Program
- 3 Year Warranty

Overview

- Dimensions: Height 556mm (inc Feet)
Depth 377mm
Front Width 331mm
Rear Width 232mm
- Weight: 25 Kgs
- Finish: AcoustiCoate Black Elastomer
- Transducer: 1 x 12" Neodymium LF Transducer
1 x 3" Neodymium H.F. Compression Driver



SS30

FULL RANGE LOUDSPEAKER



PROFESSIONAL AUDIO SYSTEMS

MANUFACTURED IN AUSTRALIA



Specifications

Transducer Complement	1 x 12" Neodymium LF Transducer 1 x 3" Neodymium H.F. Compression Driver
Frequency Response	90 Hz - 18 kHz \pm 3 dB 60 Hz - 22 kHz -10 dB
Normal Impedance	8 Ohms
Sensitivity	99 dB @ 1 Watt, 1 metre
Max Input Continuous	575 Watts RMS
Max Input Program	1150 Watts Program
Max SPL Continuous (Calculated)	127 dB @ 1 metre
Max SPL Program (Calculated)	130 dB @ 1 metre
High Frequency Dispersion	70° (H) x 40° (V) or 100° (H) x 40° (V)
Dimensions	Height 556mm (inc Feet), Depth 377mm, Front Width 331mm, Rear Width 232mm
Weight	25 Kgs
Connector Options	2 x NL4MP Speakon Connectors
Cabinet Finish	AcoustiCoate Black Elastomer Finish
Grille Finish	Black Powder Coat Paint, lined with acoustically transparent material
Hardware	2 x Handgrips Fly Track Rigging System Pole Mount Fitting



Sensitivity, Maximum Power and SPL measurements are conducted in accordance with the AES 24 Hour Pink Noise Standard.

Acoustic Technologies reserve the right to alter or amend the SS30 without prior warning in the interests of product improvement.

Suggested Applications

- Live Music Production
- Rehearsal Room Monitors
- Corporate Production
- Houses of Worship
- Musical Theatre & Sound Stages
- Television & Radio Cue, Review and Playback Monitors
- DJ Booth Monitors



Acoustic Technologies

8-10 Staple Street, Seventeen Mile Rocks
Queensland 4073, Australia
Phone (617) 3376-4122 | Fax (617) 3376-5793
Web www.atprofessional.com.au
Email info@atprofessional.com.au

- For further information and downloads please visit
www.atprofessional.com.au