

SFM10A

SELF POWERED STAGE MONITOR LOUDSPEAKER SYSTEM



Monitor Series

The Acoustic Technologies SFM10A is a self powered stage floor monitor system engineered to provide exceptional performance from an extremely compact, low profile, light weight cabinet.

The SFM10A utilizes two 8" Bass-Mid cone transducers one of which incorporates a 1" coaxial high frequency transducer. An optimized passive crossover network provides a seamless, phase coherent transition between the system components. The symmetrical baffle layout allows the SFM10A to be manufactured in mirror imaged pairs.

The SFM10A is powered by sophisticated Powersoft Class D Amplifier Module which features a fully integrated Switch Mode Power Supply and on board Digital Signal Processing delivering an output power of 1,400 Watts RMS. The Switch Mode Power Supplies features automatic mains voltage selection for world wide operation, the latest generation single-stage patented Power Factor Correction and an incredibly low 0.5 Watts standby power consumption.

The on-board Digital Signal Processing is configured with 4x Acoustic Technologies factory recommended settings which guarantees optimal system performance, output power and long term reliability. The factory presets are voiced to provide superb monitoring for a wide variety of performance applications. One preset is reserved for system operator adjustment.

The amplifier module provides Signal Input and Link XLR connectors and Powercon® AC Mains Inlet and Link connectors. A USB Type B connector allows Powersoft's Armonia software to control and monitor the system's DSP and amplifiers.

The cabinet is constructed from premium grade Birch Ply finished in black AcoustiCoate with a powder coated perforated steel grille to protect the system components. A carry handle is provided.

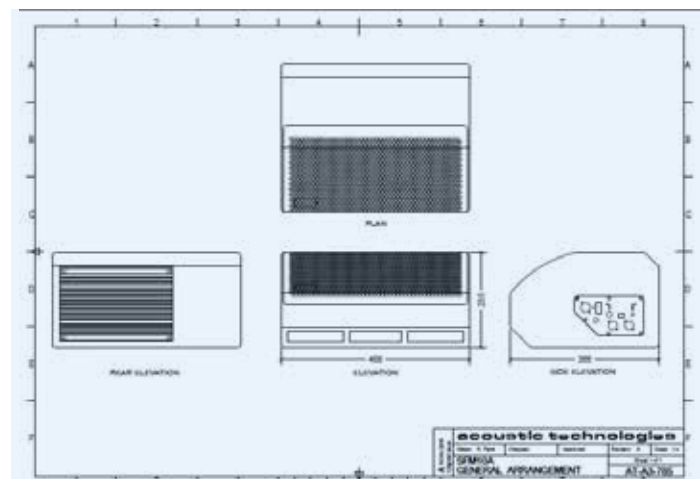
The SFM10A is the ideal stage floor monitor for all applications requiring a compact, low profile self-powered loudspeaker system such as audio/video presentations, houses of worship and television staging as well as live music and theatre productions.

Key Features

- Class D Amplifier with on-board DSP
- Flat Accurate Reproduction
- Ultra Compact and Low Profile
- 5 Year Warranty

Overview

- Dimensions: 468 mm(W) x 235 mm(H) x 366 mm(D)
- Weight: 21.5 Kgs
- Finish: Black AcoustiCoate
- Transducers: 1x 8" Bass-Mid Transducer + 1" Coaxial Transducer
1x 8" Bass-Mid Transducer



SFM10A

SELF POWERED STAGE MONITOR LOUDSPEAKER SYSTEM



Acoustic Performance

Frequency Response	70Hz - 20KHz \pm 3dB
Sensitivity (Half Space)	95dB @ 1 Watt, 1 metre
Maximum SPL (Calculated)	127dB @ 1 metre
High Frequency Dispersion	Horizontal 100° (H) x 100° (V)

System Components

Transducer Complement	1x 8" Bass-Mid Transducer + 1" Coaxial Transducer 1x 8" Bass-Mid Transducer
Crossover Network	Optimised Passive Network @ 2.9kHz

Amplifier Specifications

Input Impedance	10 k Ohms Balanced
Amplifier Module Output Power	1400 Watts RMS
Amplifier Module Type	Class D Amplifier with on-board DSP Switch Mode Power Supply
Amplifier Protection	Over Current / Short Circuit Over Temperature DC or High Frequency on Outputs
Indicator LEDs	Power On Status Signal Present Limit Active or Over Temperature Protection Preset Selected 1 - 4
Connectors and Switches	Signal Input & Signal Link XLR Connectors USB Type B Powersoft Programming Connector PowerCon® AC Mains Inlet Input Level Control

Enclosure Specifications

Physical Size	468mm (W) x 235mm (H) x 366mm (D)
Weight	21.5 Kgs
Enclosure Finish	AcoustiCoate Black Elastomer
Grille Finish	Black Powder Coat



Sensitivity, Maximum Power and SPL measurements are conducted in accordance with the AES 24 Hour Pink Noise Standard.

Acoustic Technologies reserve the right to alter or amend the SFM10A, without prior warning in the interests of product improvement.

Suggested Applications

- Live Music
Vocal & Instrumental
Monitors
- Rehearsal Room Monitors
- Corporate Production
- Houses of Worship
Monitor Systems
- Musical Theatre &
Sound Stage
Monitors
- Television & Radio
Cue, Review,
Playback Monitors
- DJ Booth Monitors
- Fashion Runway Monitors

The SFM10A enclosure is proudly manufactured in Australia, constructed of premium grade 12mm and 18mm birch ply.

The transducers are protected by a perforated steel mesh, lined with acoustically transparent material, providing a durable visually appealing finish.

The SFM10A passive crossover provides a seamless transition between the transducers.

The crossover frequency is selected to enhance the already superb performance of the individual components. Great care is taken to ensure that a phase coherent output is maintained across the entire audio bandwidth.



Acoustic Technologies

8-10 Staple Street, Seventeen Mile Rocks
Queensland 4073, Australia
Phone (617) 3376-4122 | Fax (617) 3376-5793
Web www.atprofessional.com.au
Email info@atprofessional.com.au

- For further information and downloads please visit
www.atprofessional.com.au