

SCX25A

SELF POWERED FULLRANGE LOUDSPEAKER / STAGE FLOOR MONITOR

at
PROFESSIONAL AUDIO SYSTEMS
MANUFACTURED IN AUSTRALIA



The SCX25A is powered by Powersoft DSP Amplification Platforms.



Touring and Installation

Acoustic Technologies SCX25A is a full range loudspeaker system providing exceptional performance for a broad range of professional sound reinforcement applications. The highly versatile SCX25A is eminently suited to both Front Of House and Stage Floor Monitor applications.

The SCX25A is a ported enclosure utilising a premium quality coaxial 12" transducer providing a uniform 60° x 40° modified exponential horn flare for improved acoustic loading and controlled coverage. The optimised passive crossover network provides a seamless, phase coherent transition between the system components.

The SCX25A is powered by a new generation PowerSoft Class D Module with DSP which features an integrated Switch Mode Power Supply. The amplifier module provides Soft Limit and Thermal Overload protection, balanced XLR audio connectors, a Trim control, Preset Select switch and a Powercon® mains inlet. The Preset Select switch changes settings in the factory programmed DSP to provide superb performance for all applications.

The cabinet is constructed from premium grade Birch ply finished in black AcoustiCoate. A perforated steel mesh grille protects the system components. The SCX25A offers remarkable versatility for all applications. The cabinet's hardware includes rigging track on the top and rear panels for safe suspension and an industry standard dual angle polemount adaptor. The input panel is located on the cabinet's bottom which becomes the cabinet end when used as a stage monitor allowing neat and simple cabinet cabling. Recessed handgrips are provided for easy handling.

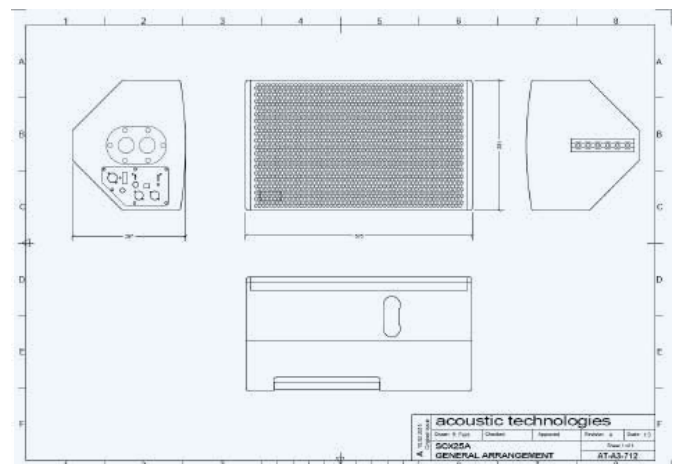
The versatility of the SCX25A ensures its place in any professional audio hire shop inventory because it is ideally suited to any installed or portable application requiring a full range loudspeaker or stage floor monitoring system such as corporate audio/video presentations, live music production, worship production and theatre performances.

Key Features

- Versatile Fullrange Loudspeaker System or Stage Floor Monitor
- Self Powered
- 3 Year Warranty

Overview

- Dimensions: 575mm (W) x 331mm (H) x 287mm (D)
- Weight: 17 Kgs
- Finish: AcoustiCoate Black Elastomer Finish
- Transducer: 12" Coaxial Transducer



SCX25A

SELF POWERED FULLRANGE LOUDSPEAKER / STAGE FLOOR MONITOR



Touring and Installation

Acoustic Performance

Frequency Response	85Hz - 18kHz \pm 3dB
Sensitivity	99dB @ 1 Watt, 1 metre
Maximum SPL (Calculated)	125dB @ 1 metre
High Frequency Dispersion	Horizontal 60° (H) x 40° (V)

System Components

Transducer Complement	1x 12" Coaxial Transducer
Crossover Network	Optimised Passive Network @ 1.5KHz

Amplifier Specifications

Input Impedance	10 kOhms Balanced
Amplifier Module Output Power	1200 Watts RMS
Amplifier Module Type	PowerSoft DSP Amplifier Platform Switch Mode Power Supply

Amplifier Protection	Thermal, Over Current, HF on Input Signal & Soft Clip
Indicator LEDs	Power On, Signal Present, Output Limit
Connectors, Controls & Switches	Female XLR - Signal Input Male XLR - Signal Link Trim Control Preset Select Switch-4 Presets Powercon AC Mains Inlet Mains Switch Mains Circuit Breaker

Enclosure Specifications

Physical Size	575mm (H) x 331mm (W) x 287mm (D)
Weight	17 Kgs
Enclosure Finish	AcoustiCoate Black Elastomer Finish
Grille Finish	Black Powder Coat Finish
Hardware	2x Handgrip Rigging Track Top and Rear Dual Angle Pole Mount Adaptor: 0° / 10° downward tilt



Sensitivity, Maximum Power and SPL measurements are conducted in accordance with the AES 24 Hour Pink Noise Standard.

Acoustic Technologies reserve the right to alter or amend the SCX25A without prior warning in the interests of product improvement.

For further information and downloads please visit
www.atprofessional.com.au

Suggested Applications

- Live Music Production
- Rehearsal Room Monitors
- Corporate Production
- Houses of Worship
- Musical Theatre & Sound Stages
- Television & Radio Cue, Review and Playback Monitors
- DJ Booth Monitors

For many years we have had requests to build a self powered dual purpose speaker- one that could be used as either a foldback monitor or a compact full range Front of House speaker.

The enclosure is custom tuned to accommodate a new 12" coaxial transducer to ensure great sound regardless of application. The enclosure is fitted with a dual angle pole-mount - straight and 10° tilt - as well as rigging track allowing safe and easy suspension when required.

The SCX25A enclosure is constructed of high quality void free 12mm & 18mm Finnish Birch Ply.

The transducers are protected by a perforated steel mesh, lined with acoustically transparent foam, providing a durable visually appealing finish.



Acoustic Technologies

8-10 Staple Street, Seventeen Mile Rocks
Queensland 4073, Australia
Phone (617) 3376-4122 | Fax (617) 3376-5793
Web www.atprofessional.com.au
Email info@atprofessional.com.au