



BLACKBIRD CLA+ SYSTEM

CLA 700A+

CLA LF3200A+



Composite Line Array

The CLA700A+ Composite Line Array and the CLA LF3200A+ Sub Bass Enclosure combine to create the self powered BLACKBIRD CLA+ Sound Reinforcement System. The BLACKBIRD CLA+ System is the ideal solution for compact touring or in-house systems offering highly advanced line array technology in a compact and easy to use format.

The CLA+ Series enclosures and components are identical to the CLA Series cabinets. Both systems are powered by sophisticated Powersoft Class D Amplifier Modules. However, the CLA+ Series' amplifiers feature enhanced Digital Signal Processing (DSP) with greater processing capabilities for the ultimate professional audio system. Powersoft's Armonia software facilitates system wide networking capabilities providing complete control and monitoring of the entire system.

The CLA700A+ is a 2 way composite line array system utilising well established line array principles to achieve exceptional frequency response and pattern control. The Bass/Mid Section features 4x 8", Neodymium Loudspeakers. The critical High Frequencies are reproduced by a dual element ISOPHASIC HF Aperture. The CLA700A+ dispersion pattern is 150° Horizontal by 20° Vertical providing maximum audience coverage with unparalleled intelligibility. When 2x CLA700A+ are stacked, the vertical dispersion is reduced to 10°. Frequency response is 50Hz - 20kHz.

The CLA LF3200A+ Sub Bass System employs a high power handling 18" transducer to provide a frequency response from 32Hz - 200Hz which is tailored to perfectly compliment the CLA700A+.

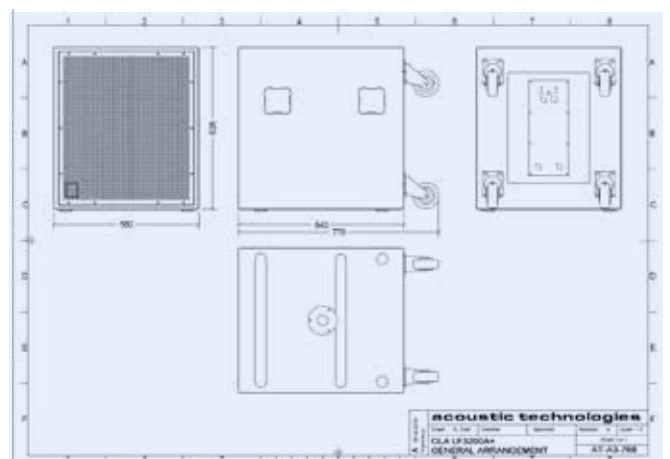
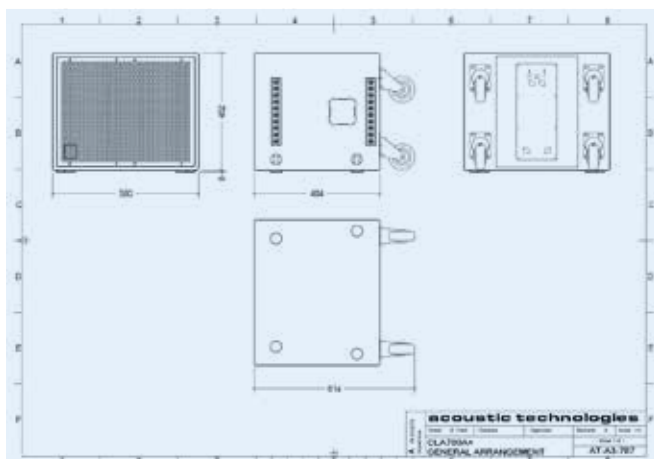
The CLA700A+ and CLA LF3200A+ Powersoft Class D Amplifier Modules feature fully integrated Switch Mode Power Supplies and on board DSP. Output power is 1,600 Watts RMS per channel for dual channel mode (CLA700A+) and 3,200 Watts RMS for single channel bridge mode (CLA LF3200A+). The DSP in each amplifier module is configured with Acoustic Technologies Factory Recommended Settings which guarantee optimal system performance, output power and long term reliability.

A standard self powered BLACKBIRD CLA+ System employs 2x CLA700A+ Line Array Cabinets and 2x CLA LF3200A+ Sub Bass Cabinets per stack. Enhanced low frequency reinforcement can be readily achieved with an additional 2x CLA LF3200A+Sub Bass Cabinets per stack.

The cabinets are supplied with handgrips, cabinet locating feet and safety attachment points. Castors are fitted as standard for the CLA LF3200A+ and are an option for the CLA700A+. Acoustic Technologies Blackbird CLA+ Series cabinets are finished in black AcoustiCoate polymer finish with black powder coated grilles.



Touring and Installation





BLACKBIRD CLA+ SYSTEM

CLA700A+

CLA LF3200A+



PROFESSIONAL AUDIO PRODUCTS
MADE IN AUSTRALIA



Touring and Installation

CLA700A+ Cabinet Specifications

Acoustic Performance

Frequency Response	50Hz - 20kHz ± 3dB
Sensitivity	102dB @ 1 Watt, 1 metre
Maximum SPL (Calculated)	134dB @ 1 metre
High Frequency Dispersion	150° (H) x 20° (V)

System Components

Transducer Compliment	4x 8" Bass-Mid Transducer 2x 1.5" H.F. Transducer on ISOPHASIC Aperture
-----------------------	--

Enclosure Specifications

Physical Size	Height 452mm, Width 560mm Depth 484mm (excluding castors), 614mm (including castors)
Weight	39 Kgs (excluding castors), 42 Kgs (including castors)
Enclosure Finish	AcoustiCoate Black Elastomer Finish
Grille Finish	Black Powder Coat Paint Finish
Hardware	2x Handgrips Cabinet Flying Hardware Cabinet Locating and Safety Attach Points for safe cabinet ground stacking

CLA LF3200A+ Cabinet Specifications

Acoustic Performance

Frequency Response	32Hz - 200Hz ± 3dB
Sensitivity	98dB @ 1 Watt, 1 metre
Maximum SPL (Calculated)	133dB @ 1 metre

System Components

Transducer Compliment	1x 18" Sub Bass Transducer
-----------------------	----------------------------

Enclosure Specifications

Physical Size	Height 626mm, Width 560mm Depth 640mm (excluding castors), 770mm (including castors)
Weight	55 Kgs (excluding castors), 58 Kgs (including castors)
Enclosure Finish	AcoustiCoate Black Elastomer Finish
Grille Finish	Black Powder Coat Paint Finish
Hardware	4x Handgrips 4x Castors Cabinet Locating and Safety Attach Points for safe cabinet ground stacking

CLA700A+/CLALF3200A+ Amplifier Specifications

Input Impedance	10k Balanced
Amplifier Module Output Power	1600+1600 Watts RMS Dual Channel 3200 Watts RMS Bridged
Amplifier Module Type	Dual Channel Class D with onboard DSP Switch Mode Power Supply
Amplifier Protection	Over Current / Short Circuit Over Temperature DC or High Frequency on Outputs
Indicator LEDs	Power On Status Signal Present Limit Active or OverTemperature Protection Preset Selected 1 - 4
Connectors & Controls	Signal Input & Link XLR Connector RJ45 Powersoft Networking Connector PowerCon® AC Mains Inlet & Link Input Level Control
Switches	Mains Switch & Circuit Breaker Preset Selector Switch

Suggested Applications

- ▣ Live Music Presentations
- ▣ Dance Clubs
- ▣ Outdoor Sporting Events
- ▣ Houses of Worship
- ▣ Corporate Presentations
- ▣ Concert Sound
- ▣ Festivals
- ▣ Public Events

Sensitivity, Maximum Power and SPL measurements are conducted in accordance with the AES 24 Hour Pink Noise Standard.

Acoustic Technologies reserve the right to alter or amend CLA700A+ and the CLALF3200A+, without prior warning in the interests of product improvement.



Acoustic Technologies

8-10 Staple Street, Seventeen Mile Rocks
Queensland 4073, Australia
Phone (617) 3376-4122 | Fax (617) 3376-5793
Web www.atprofessional.com.au
Email info@atprofessional.com.au

- ▣ For further information, general arrangement and downloads please visit:

www.atprofessional.com.au