

SCX28

PROFESSIONAL FULL RANGE LOUDSPEAKER / STAGE FLOOR MONITOR



Touring and Installation

Acoustic Technologies SCX28 is a full range loudspeaker system providing exceptional performance for a broad range of professional sound reinforcement applications. The highly versatile SCX28 is eminently suited to both Front Of House and Stage Floor Monitor applications.

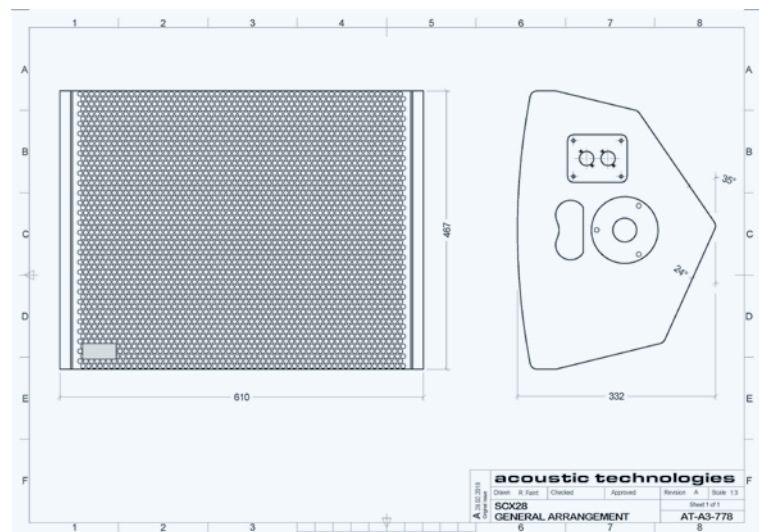
The SCX28 is a ported enclosure utilising a premium quality coaxial 15" transducer providing a uniform 80° conical dispersion pattern. The SCX28 allows either passive or active operation to be selected by a recessed switch. The optimised passive crossover network provides a seamless, phase coherent transition between the system components.

The cabinet is constructed from premium grade Birch ply finished in black AcoustiCoate. A perforated steel mesh grille protects the system components. The SCX28 offers remarkable versatility for all applications. The cabinet's hardware includes rigging track on the top and rear panels for safe suspension and an industry standard polemount adaptor. Dual Speakon Connection Panels are provided on the top and bottom panels which become the cabinet ends when used as a stage monitor allowing neat and simple cabinet cabling. Recessed hand grips are provided for easy handling.

The versatility of the SCX28 ensures its place in any professional audio hire shop inventory because it is ideally suited to any installed or portable application requiring a full range loudspeaker or stage floor monitoring system such as corporate audio/video presentations, live music production, worship production and theatre performances.

Key Features

- Versatile Full Range Loudspeaker System or Stage Floor Monitor
- 960 Watt Power Handling
- Active or Passive Operation
- 3 Year Warranty



SCX28

PROFESSIONAL FULL RANGE LOUDSPEAKER / STAGE FLOOR MONITOR



Specifications

Acoustic Performance

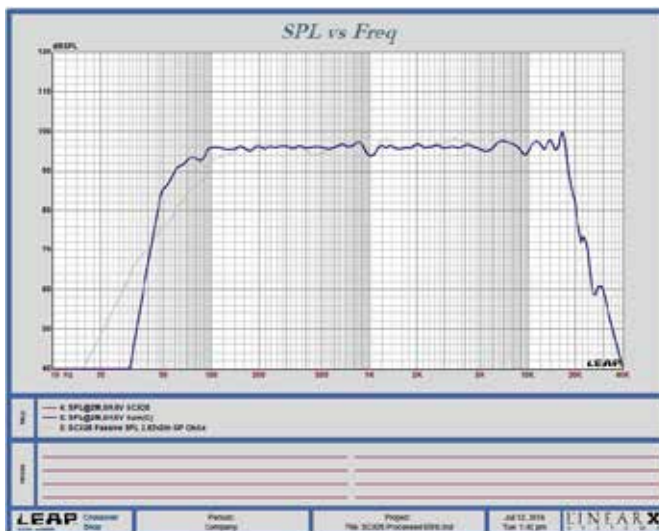
Frequency Response	40Hz -18kHz +- 3dB
Sensitivity	99dB @ 1Watt, 1 metre
Max Input Continuous	480 Watts RMS
Max Input Program	960 Watts Program
Max SPL Continuous (Calculated)	126dB @ 1 metre
Max SPL Program (Calculated)	129dB @ 1 metre
High Frequency Dispersion	Horizontal 60° Vertical 40°

Transducers & Components

Transducer Complement	1x 15" Coaxial Transducer
Nominal Impedance	8 Ohms
Crossover Frequency	Passive Operation: 1.0kHz

Enclosure Specifications

Physical Size	610mm (H) x 467mm (W) x 332mm (D)
Weight	20 Kgs
Enclosure Finish	AcoustiCoate Black Elastomer Finish
Grille Finish	Black Powder Coat Finish
Hardware	2x Hand Grip Rigging Track Top and Rear Pole Mount Adaptor



Sensitivity, Maximum Power and SPL measurements are conducted in accordance with the AES 24 Hour Pink Noise Standard.

Acoustic Technologies reserve the right to alter or amend the SCX28 without prior warning in the interests of product improvement.

For further information and downloads please visit
www.atprofessional.com.au

Suggested Applications

- Live Music Production
- Rehearsal Room Monitors
- Corporate Production
- Houses of Worship
- Musical Theatre & Sound Stages
- Television & Radio Cue, Review and Playback Monitors
- DJ Booth Monitors



Acoustic Technologies

8-10 Staple Street, Seventeen Mile Rocks
Queensland 4073, Australia
Phone (617) 3376-4122 | Fax (617) 3376-5793
Web www.atprofessional.com.au
Email info@atprofessional.com.au