

SCX28A

PROFESSIONAL FULL RANGE SELF POWERED
LOUDSPEAKER / STAGE FLOOR MONITOR

atTM

PROFESSIONAL AUDIO SYSTEMS

MANUFACTURED IN AUSTRALIA



Touring and Installation

Acoustic Technologies SCX28A is a full range loudspeaker system providing exceptional performance for a broad range of professional sound reinforcement applications. The highly versatile SCX28A is eminently suited to both Front Of House and Stage Floor Monitor applications.

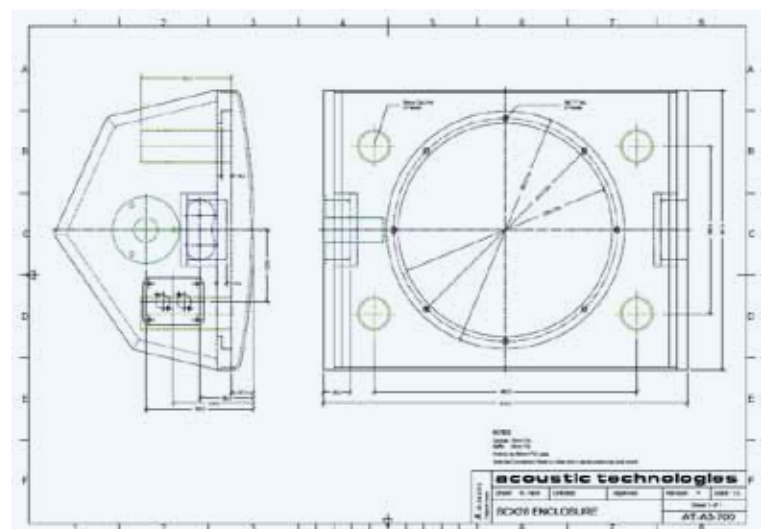
The SCX28A is a ported enclosure utilising a premium quality coaxial 15" transducer providing a uniform 60°X 40° nominal coverage pattern.

The cabinet is constructed from premium grade Birch ply finished in black AcoustiCoate. A perforated steel mesh grille protects the system components. The SCX28A offers remarkable versatility for all applications. The cabinet's hardware includes an industry standard polemount adaptor. Recessed hand grips are provided for easy handling.

The versatility of the SCX28A ensures its place in any professional audio production company inventory because it is ideally suited to any installed or portable application requiring a full range loudspeaker or stage floor monitoring system such as corporate audio/video presentations, live music production, worship production and theatre performances.

Key Features

- Versatile Full Range Self Powered Loudspeaker System or Stage Floor Monitor
- Self Powered Operation
- 3 Year Warranty



SCX28A

PROFESSIONAL FULL RANGE SELF POWERED
LOUDSPEAKER / STAGE FLOOR MONITOR



Specifications

Acoustic Performance

Frequency Response	40Hz -18kHz +- 3dB
Sensitivity	99dB @ 1Watt, 1 metre
Max Transducer Power Handling Continuous	480 Watts RMS
Max Transducer Power Handling Program	960 Watts Program
Max SPL Continuous (Calculated)	126dB @ 1 metre
Max SPL Program (Calculated)	129dB @ 1 metre
High Frequency Dispersion	Horizontal 60° Vertical 40°

Transducers & Components

Transducer Complement	1x 15" Coaxial Transducer
Nominal Impedance	8 Ohms
Modified Exponential horn flare for improved acoustic loading and controlled coverage	

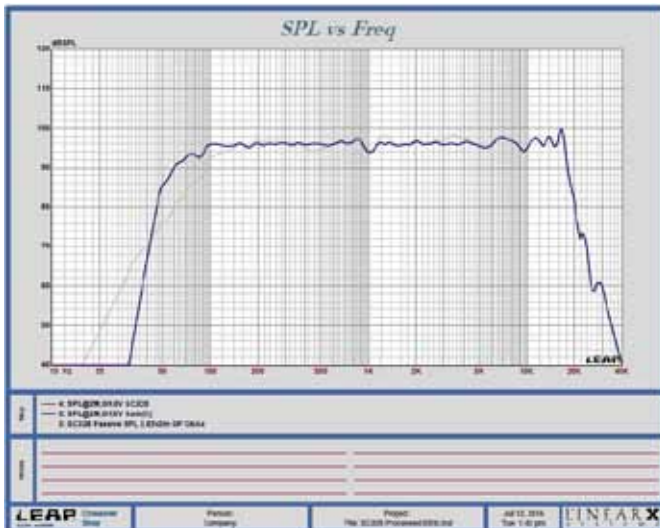
Amplification and DSP

2 x 700W per channel PowerSoft Amplification Platform
4 x PowerSoft DSP pre-set settings

Enclosure Specifications

Physical Size	610mm (H) x 467mm (W) x 332mm (D)
Weight	21 Kgs
Enclosure Finish	AcoustiCoate Black Elastomer Finish
Grille Finish	Black Powder Coat Finish
Hardware	2x Hand Grip Pole Mount Adaptor

Touring and Installation



Sensitivity, Maximum Power and SPL measurements are conducted in accordance with the AES 24 Hour Pink Noise Standard.

Acoustic Technologies reserve the right to alter or amend the SCX28A without prior warning in the interests of product improvement.

For further information and downloads please visit
www.atprofessional.com.au

Suggested Applications

- Live Music Production
- Rehearsal Room Monitors
- Corporate Production
- Houses of Worship
- Musical Theatre & Sound Stages
- Television & Radio Cue, Review and Playback Monitors
- DJ Booth Monitors



Acoustic Technologies

8-10 Staple Street, Seventeen Mile Rocks
Queensland 4073, Australia
Phone (617) 3376-4122 | Fax (617) 3376-5793
Web www.atprofessional.com.au
Email info@atprofessional.com.au